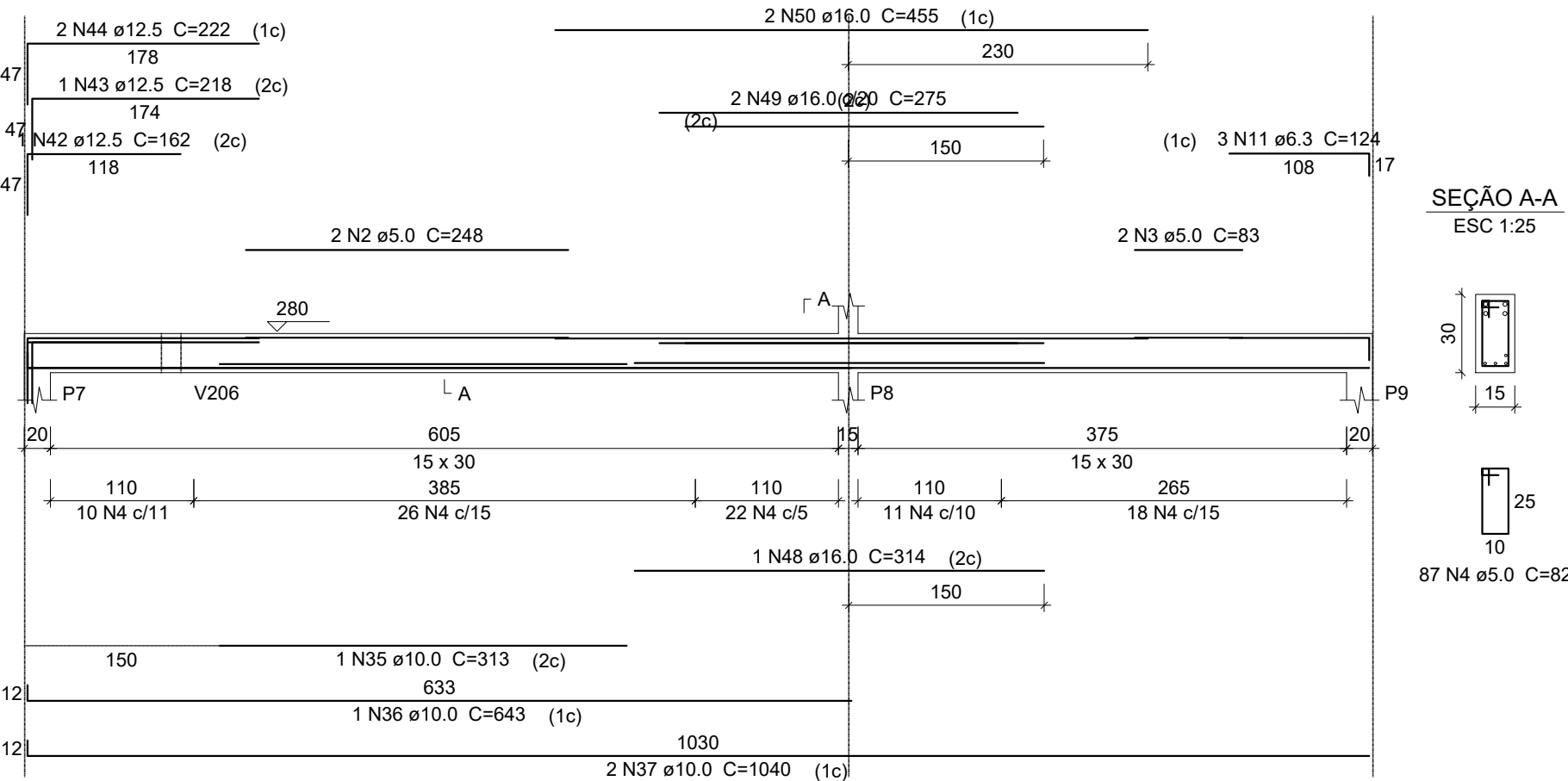
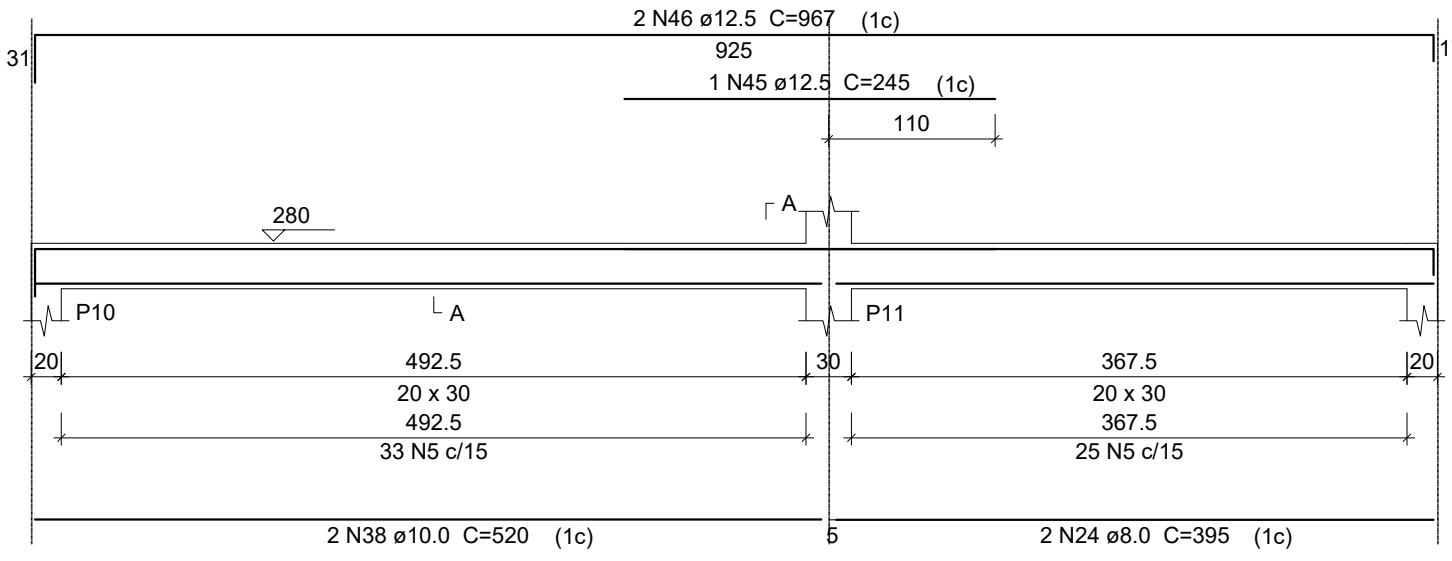


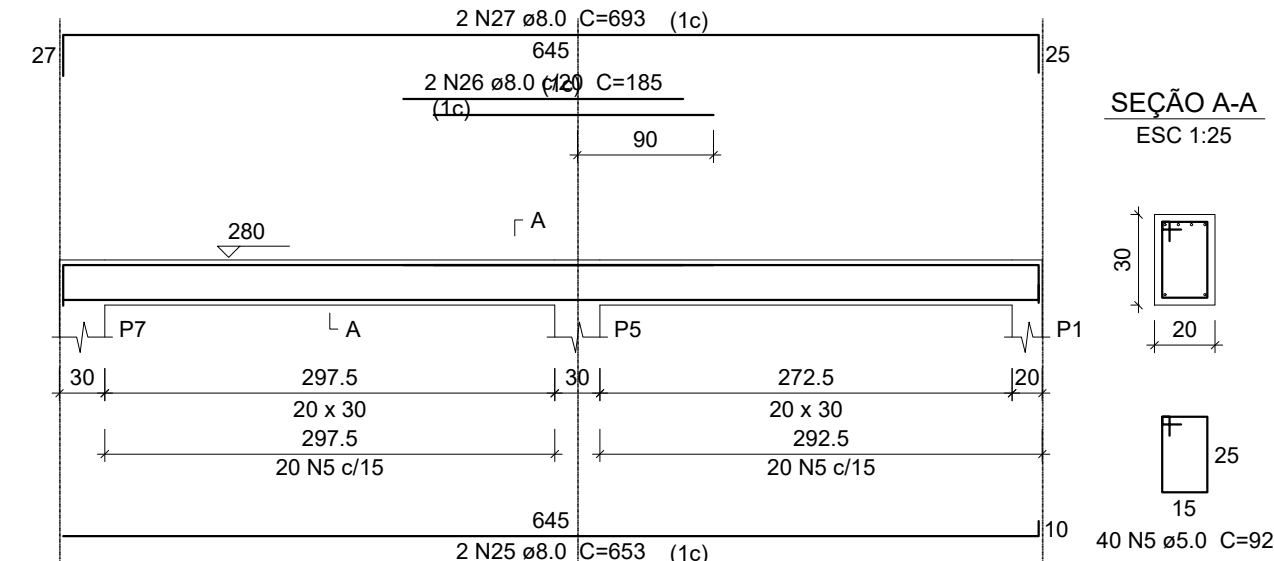
V203
ESC 1:50



V204
ESC 1:50



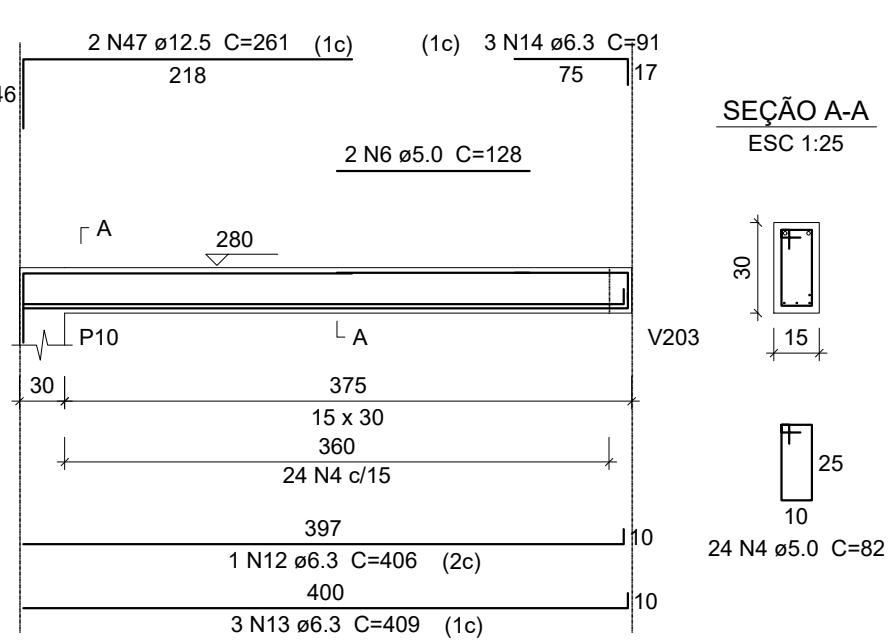
V205
ESC 1:50



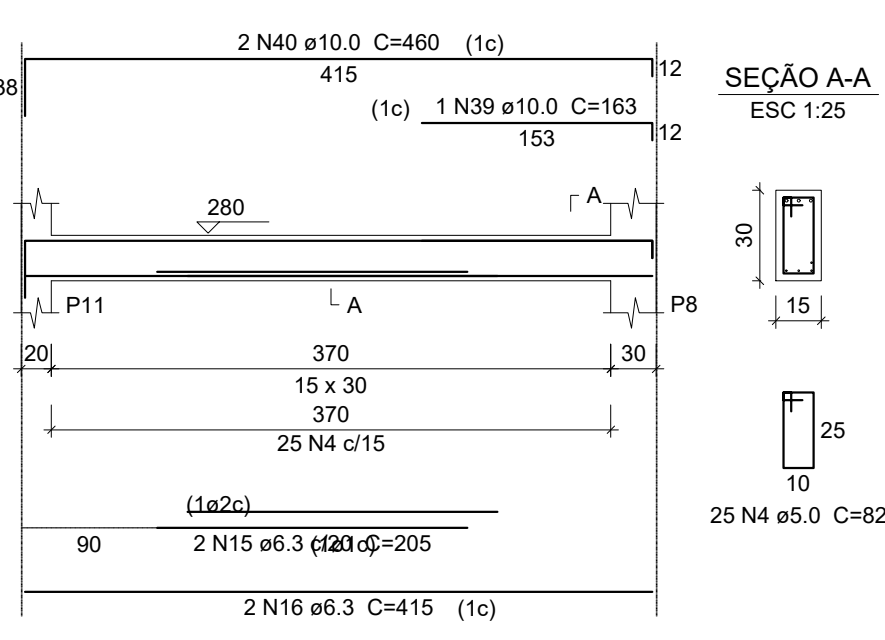
Relação do aço

AÇO	N	DIAM	Q	UNIT (cm)	C.TOTAL (cm)
CA60	1	5.0	3	115	345
	2	5.0	2	248	496
	3	5.0	2	83	166
	4	5.0	176	82	14432
	5	5.0	155	92	14260
	6	5.0	2	128	256
	7	5.0	16	41	656
	8	5.0	8	87	696
	9	5.0	6	45	270
	10	5.0	3	147	441
CA50	11	6.3	3	124	372
	12	6.3	1	406	406
	13	6.3	3	409	1227
	14	6.3	3	91	273
	15	6.3	5	205	1025
	16	6.3	2	415	830
	17	6.3	3	430	1290
	18	6.3	1	410	410
	19	6.3	3	545	1635
	20	6.3	1	47	47
	21	6.3	2	129	258
	22	6.3	11	155	1705
	23	6.3	2	106	212
	24	8.0	2	395	790
	25	8.0	2	653	1306
	26	8.0	2	185	370
	27	8.0	2	693	1386
	28	8.0	2	338	676
	29	8.0	1	263	263
	30	8.0	2	925	1850
	31	8.0	3	205	615
	32	8.0	1	245	245
	33	8.0	2	150	300
	34	8.0	2	977	1954
	35	10.0	1	313	313
	36	10.0	1	643	643
	37	10.0	2	1040	2080
	38	10.0	2	520	1040
	39	10.0	1	163	163
	40	10.0	2	460	920
	41	10.0	2	143	286
	42	12.5	1	162	162
	43	12.5	1	218	218
	44	12.5	2	222	444
	45	12.5	1	245	245
	46	12.5	2	967	1934
	47	12.5	2	261	522
	48	16.0	1	314	314
	49	16.0	2	275	550
	50	16.0	2	455	910

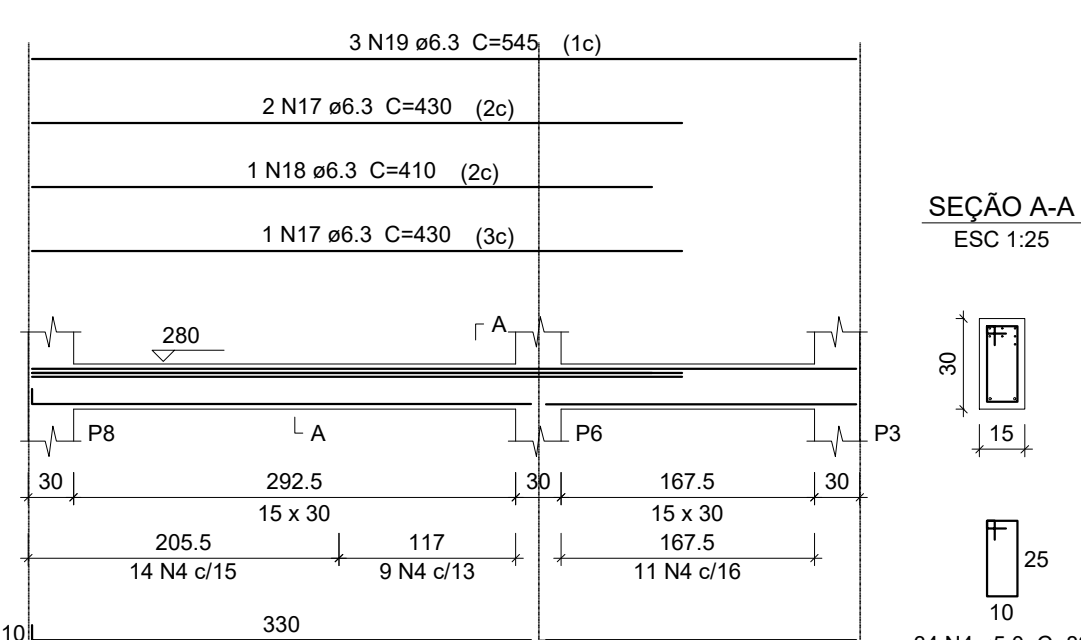
V206
ESC 1:50



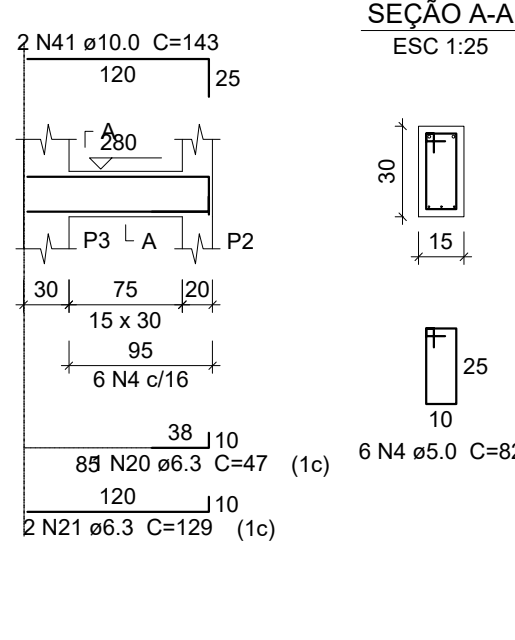
V207
ESC 1:50



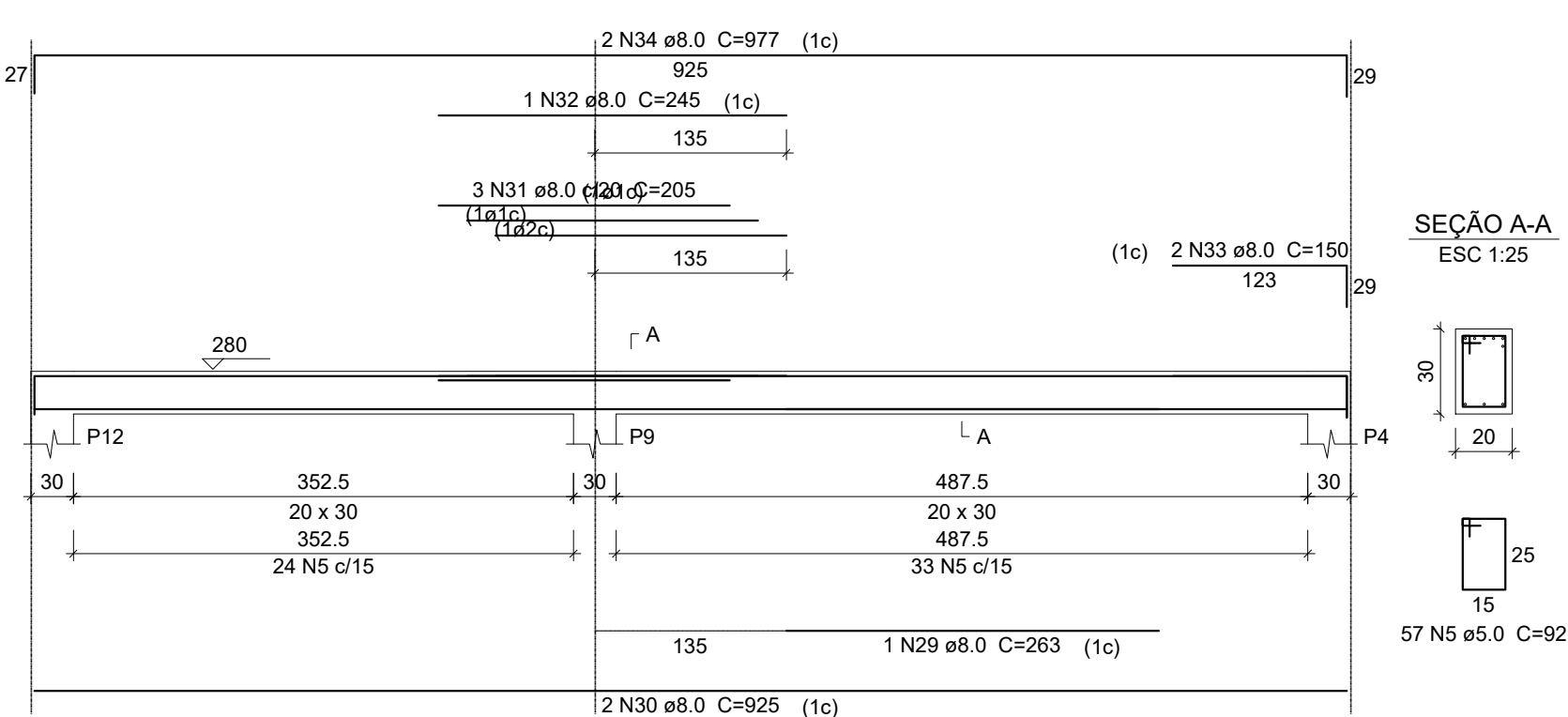
V208
ESC 1:50



V209
ESC 1:50



V210
ESC 1:50

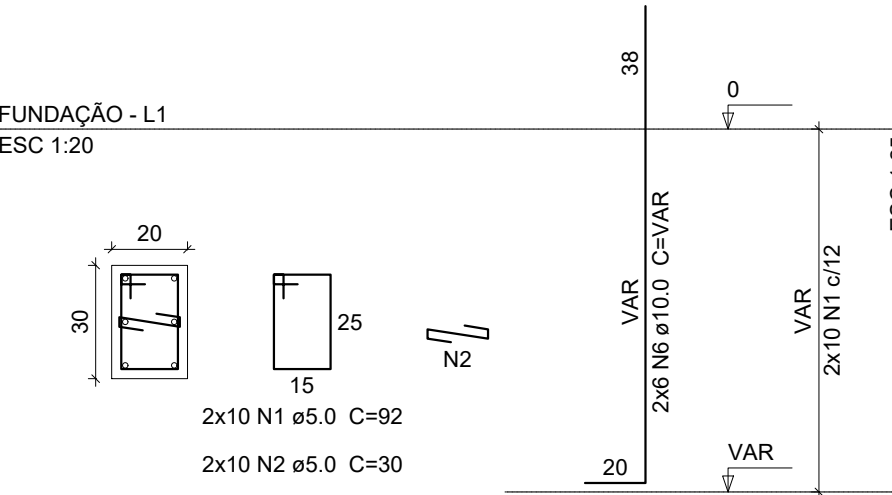


Resumo do aço

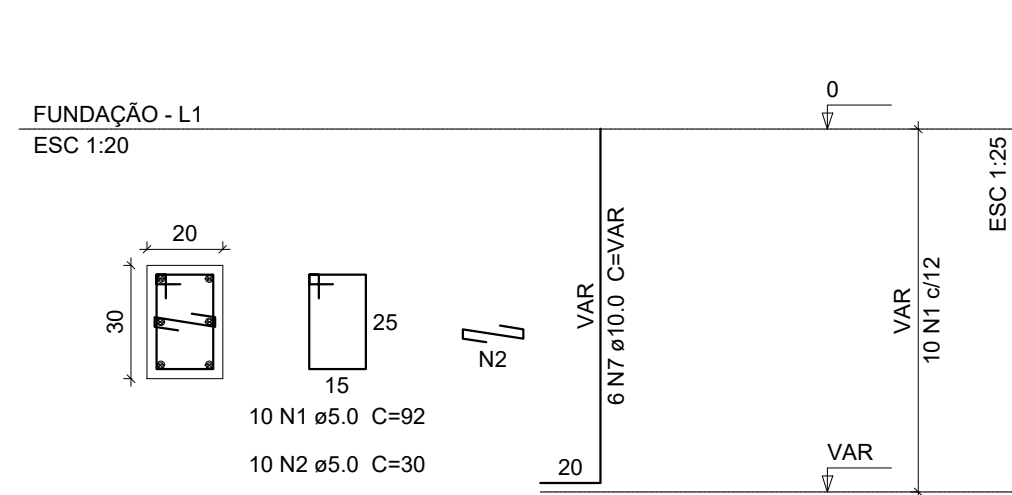
AÇO	DIAM	C.TOTAL (m)	PESO (kg)
CA50	6.3	96.90	23.74
	8.0	97.6	38.07
	10.0	54.5	33.21
	12.5	35.3	33.66
	16.0	17.8	27.72
	5.0	320.18	49.31
PESO TOTAL			
CA50		156.40	
CA60		49.31	

Vol. de concreto total (C-25) = 2,65 m³
Área de forma total = 39,09 m²

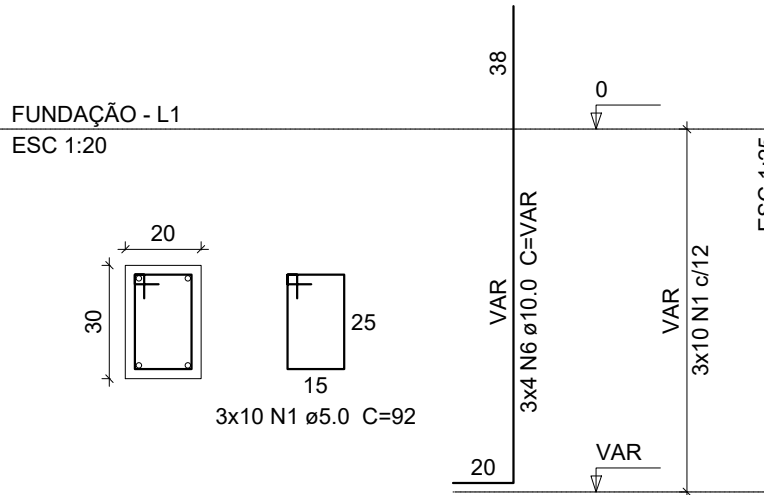
P1=P2



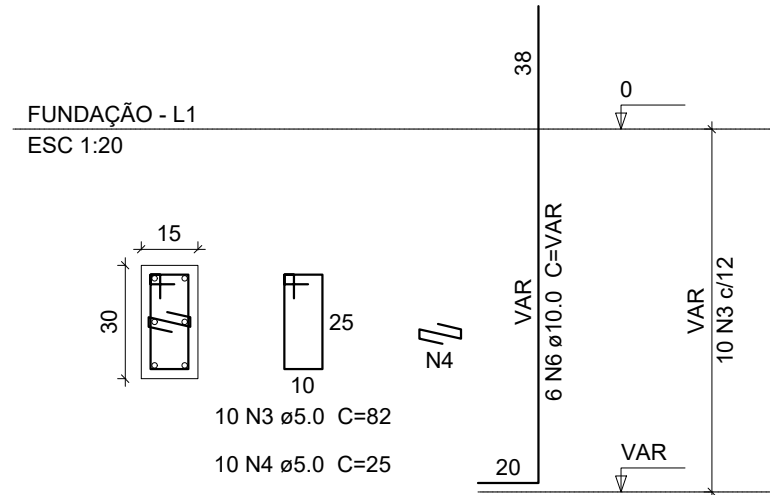
P10



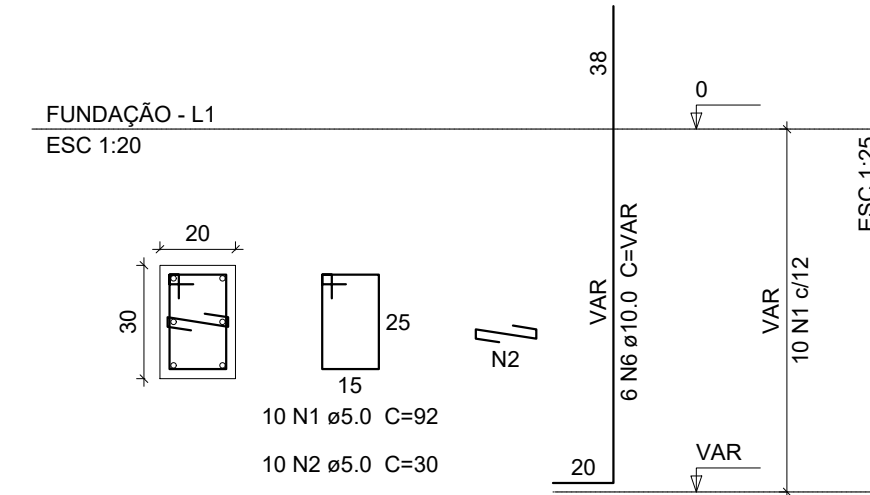
P5=P9=P12



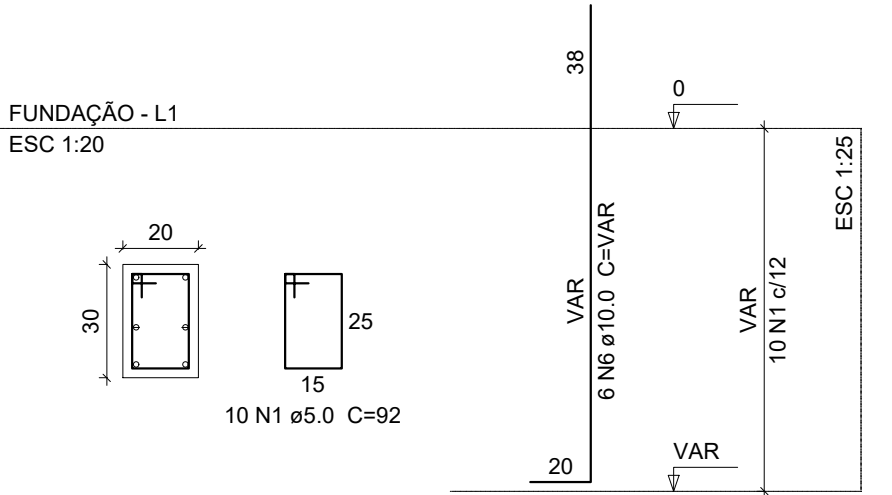
P3



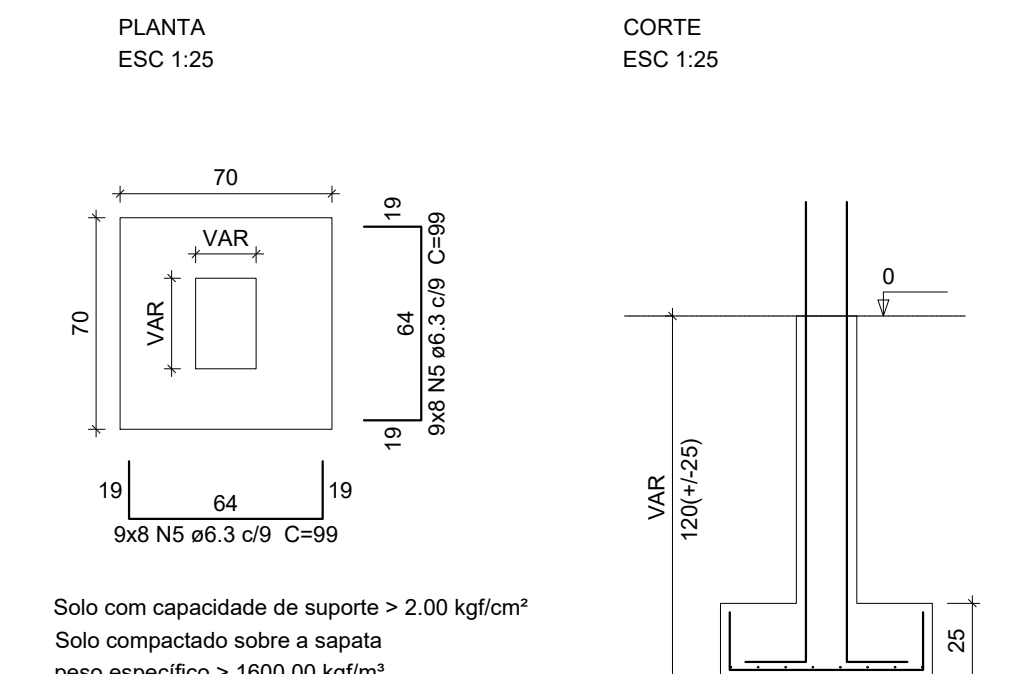
P4



P7



S1=S2=S3=S4=S5=S7=S9=S10=S12



Solo com capacidade de suporte > 2,00 kgf/cm²
Solo compactado sobre a sapata
peso específico > 1600,00 kgf/m³

Relação do aço

AÇO	N	DIAM	Q	UNIT (cm)	C.TOTAL (cm)
CA60	1	5.0	80	92	7360
	2	5.0	40	30	1200
	3	5.0	10	82	820
	4	5.0	10	25	250
CA50	5	6.3	144	99	14256
	6	10.0	42	VAR	VAR
	7	10.0	6	VAR	VAR

Resumo do aço

AÇO	DIAM	C.TOTAL (m)	PESO (kg)
CA50	6.3	142.6	34.56
	10.0	82.1	50.04
CA60	5.0	96.3	14.67
PESO TOTAL			
CA50		84.60	
CA60		14.67	

Vol. de concreto total (C-25) = 1,73 m³
Área de forma total = 16,99 m²

CONTRATADA: CARVALHO AMARAL ENGENHARIA & PROJETOS
CNPJ Nº: 16.783.046/0001-35
AVENIDA MESTRA FRINHA, Nº 726 - 1º ANDAR,
CIDADE SANTA MARIA, MONTES CLAROS/MG - CEP: 39401-074

CONTRATANTE: SÃO ROMÃO
CNPJ Nº: 24.891.418/0001-02
AVENIDA NEWTON GONÇALVES FERREIRA, Nº 337 - CENTRO
SÃO ROMÃO/MG - CEP: 39.290-000

RESPONSÁVEL TÉCNICO: GABRIEL VINICIUS MARTINS
CREA: 230.779/D - MG

RESPONSÁVEL LEGAL: PREFEITO(A) MUNICIPAL DE SÃO ROMÃO

PROJETO ESTRUTURAL CONSTRUÇÃO DE CAPELA VELÓRIO NO MUNICÍPIO DE SÃO ROMÃO

DESCRIÇÃO: DETALHAMENTO CONSTRUTIVO DAS VIGAS SUPERIORES E LAJE

ENDEREÇO DA OBRA: A DEFINIR

MUNICÍPIO: SÃO ROMÃO/MG **DATA INICIAL:** 28 DE JANEIRO DE 2022

FASE DO PROJETO: INICIAL **ART/RT:** **DATA DA REV.:** 24 DE JUNHO DE 2024

REFERÊNCIA DO PROJETO: SRM-0078 **ESCALA:** INDICADAS **Nº REVISÃO:** 01 **03/05**

ESTRUTURAL